

STELLAR AGGRESSOR™

1184 Mini OTR



The 1184 OTR Series is an innovative tire service truck for multi-purpose use in the truck fleet and small OTR industries. The diversity of these trucks will allow the user to meet their needs in a fast, efficient, economical and safe manner far beyond any competitor's model.

The 1184 OTR truck comes with many features designed with the user in mind. The 11' all aluminum body is lightweight and dependable to maximize the payload. This versatile tire service body features an abundance of storage and 238 cubic feet of haul space. The floor of the body is made of sturdy aluminum planking, and the hardware is durable stainless steel. The tool compartment doors slide up and in to allow for easy access inside the compartment. Also featured on the 1184 OTR body is a left fold-down rack, and optional wheel well lights.



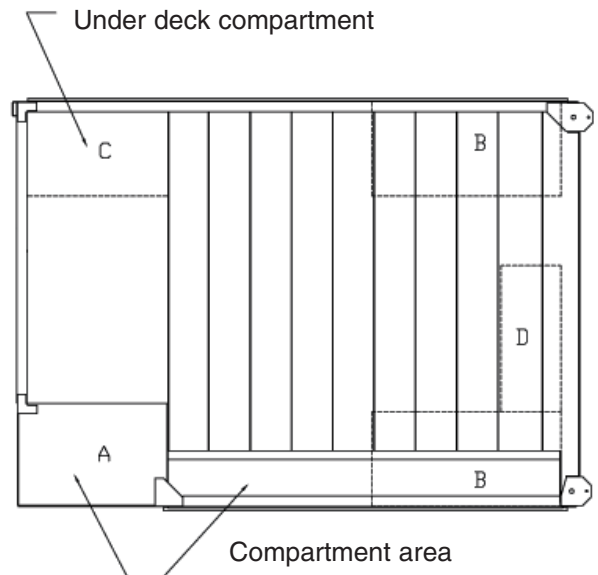
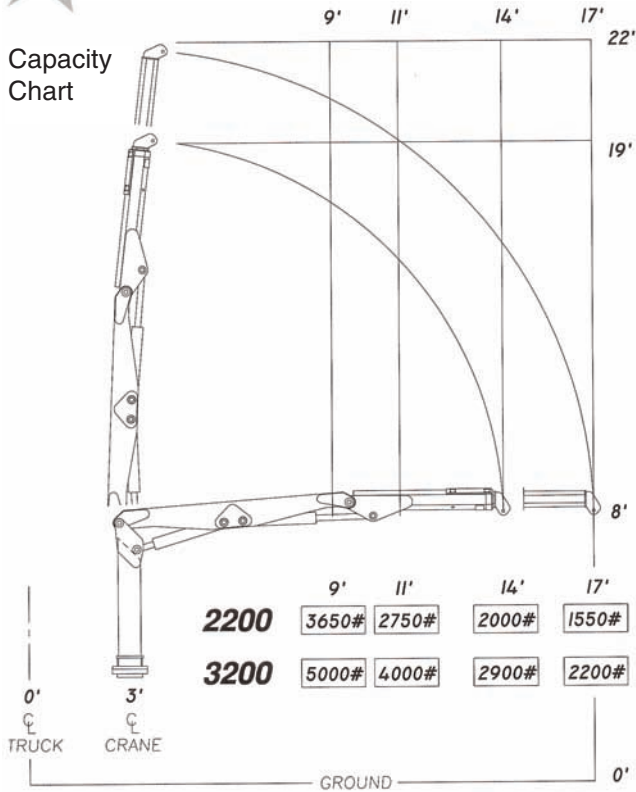
The 1184 OTR truck can be equipped with either a model 2200 or 3200 hydraulic knuckleboom crane. Both of these cranes are designed to handle the largest of farm tires and the smaller sized OTR tires. These cranes are both operated by a standard fully proportional radio remote control.

Capacity specifications are found on the back of this brochure. Optional accessories include, 1/2" x 50' and 3/8" x 50' hose reels, a 12V trouble light, plastic storage bins and socket racks.



The SHD-66DD direct-driven hydraulic-drive air compressor is mounted on the crane base. This compressor has a 46 CFM at 175 PSI output. The location allows for cool, clean, fresh air intake, and easy maintenance and serviceability. The SHD-66DD carries a 2-year warranty because of these features.

STELLAR AGGRESSOR™ 1184 Mini OTR



- A: Left front vertical compartment
35W x 64H x 24D
Horizontal compartment
91.5W x 21H x 13D
- B: Rear under deck compartments
44W x 19H x 22D
- C: Right front under deck compartment
35W x 19H
- D: Under deck jack storage compartment
14W x 14H x 34D

Specifications	2200	3200
Crane Rating	22,000 foot/pounds	32,000 foot/pounds
Boom Extension	Hydraulic 32 inches	Hydraulic 32 inches
Max. Horizontal Reach	14 foot-from CL of Crane 17 foot-from CL of Truck	14 foot-from CL of Crane 17 foot-from CL of Truck
Rotation	320 degree power (worm gear drive)	290 degree power (worm gear drive)
Lifting Capacities (from CL of truck)	3,650 lbs. @ 9 foot 2,750 lbs. @ 11 foot 2,000 lbs. @ 14 foot 1,550 lbs. @ 17 foot	5,000 lbs. @ 9 foot 4,000 lbs. @ 11 foot 2,900 lbs. @ 14 foot 2,200 lbs. @ 17 foot
Power Supply Required	PTO & Pump (4 gpm @ 2800 psi)	PTO & Pump (4 gpm @ 2800 psi)
Controls	Proportional Radio Control Standard	Proportional Radio Control Standard
Stowed Height (above truck frame)	65 inches	67 inches
Mounting Space Req.	24 inches	24 inches
Approx. Shipping Weight	1,350 lbs.	1,900 lbs.

Model SHD-66DD direct drive hydraulic air compressor is a 4-cylinder, 2-stage compressor with a 100 cubic inch displacement and an output capacity of 46 cfm. @ 175 psi. The crane boom is stored in travel position in a unique crane saddle, which will ease wear and tear on the turntable bearing.



280 West Third Street
Garner, Iowa 50438
1-800-321-3741
Fax: 641-923-2812
E-mail: sales@tiretruck.com
www.tiretruck.com

Designed & Manufactured in the U.S.A.
*Specifications may change without notification.
Copyright © 2003 Stellar Industries, Inc.